



Received: June 08, 2024

Revised: August 12, 2024

Accepted: August 15, 2024

*Corresponding author: Rosmainda Butar Butar, Universitas HKBP Nommensen, Medan, Indonesia.

E-mail: rosmainda.student@gmail.com

DESCRIPTIVE OF QUANTITATIVE DATA | SUPPLEMENTARY

Implementation of Law Number 8 of 2016 on the Empowerment of People with Disabilities in Medan City

Rosmainda Butar Butar¹, Artha Lumban Tobing², Jonson Rajagukguk³

^{1,2,3}Universitas HKBP Nommensen, Medan, Indonesia. Email: Rosmainda.student@gmail.com, artha.tobing@uhn.ac.id, jonson.rajagukguk@uhn.ac.id, jonson.rajagukguk@uhn.ac.id

Abstract: Individuals with disabilities are citizens of the Republic of Indonesia who, as stipulated by the 1945 Constitution, are entitled to the same status, rights, obligations, and roles as all other citizens. In the realm of public services, they are afforded equal access across all sectors. This study aims to examine the implementation of Law Number 8 of 2016 concerning the empowerment of people with disabilities and to identify the specific programs initiated by the Medan City Government to enhance the empowerment of this community. The research adopts a qualitative approach, employing data collection and interview techniques. The findings reveal that, as of June 2023, there are 1,805 individuals with disabilities (based on data from 2022-2023). The study concludes that the implementation of Law Number 8 of 2016 has been effectively executed, with the Social Service playing a key role in administering the Medan City Government's programs, including the distribution of assistance to individuals with disabilities.

Keywords: Implementation of Law, Persons with Disabilities.

1. INTRODUCTION

This research seeks to investigate how the Medan City government enforces Law Number 8 of 2016 concerning Persons with Disabilities, focusing on the empowerment of the disabled community to ensure equal opportunities in various aspects of life. According to data from the Central Statistics Agency (BPS), Medan City has a population of 2,270,894, of which 1,805 are individuals with disabilities. Law Number 8 of 2016 is a legislative framework aimed at protecting, recognizing, and fulfilling the rights of Persons with Disabilities. This law addresses a broad range of issues, including the protection of fundamental rights, access to healthcare, education, and employment, as well as promoting social inclusion and the active participation of Persons with Disabilities in society. It serves as the foundation for policies and programs designed to improve the quality of life for people with disabilities in Indonesia. As citizens of Indonesia, individuals with disabilities possess the same rights, obligations, and status as other citizens. They are integral components of the nation's human resources, and their rights must be upheld, particularly through empowerment programs, intellectual development, and skill enhancement. National Development is a continuous effort aimed at enhancing the quality of life for all Indonesians by leveraging advancements in science and technology. Achieving these development objectives requires the active participation of both the community and the government, particularly in the realm of social welfare. Every citizen has equal rights and obligations to contribute to national development.

Special protections for Persons with Disabilities are enshrined in Article 28H, paragraph 2 of the 1945 Constitution, which states, "Everyone has the right to receive special facilities and treatment to obtain the same opportunities and benefits in order to achieve equality and justice." These rights provide the foundation for individuals with disabilities to defend their livelihoods and advocate for their entitlements. However, in practice, many of these rights remain unmet, and the government often overlooks them. According to Article 4 of Law Number 8 of 2016, Persons with Disabilities are categorized as follows: Persons with Physical Disabilities, Persons with Intellectual Disabilities, Persons with Mental Disabilities, Persons with Sensory Disabilities.

The law emphasizes that accessibility is the provision of conveniences that enable persons with disabilities to achieve equal opportunities. However, the current situation reflects significant challenges for Persons with Disabilities in accessing their rights, including public facilities, political participation, employment opportunities, legal protection, education, information and



communication, and healthcare services. Considering these circumstances, the author is motivated to conduct research for a thesis titled "Implementation of Law Number 8 of 2016 on the Empowerment of People with Disabilities in the City of Medan."

2. LITERATURE REVIEW

2.1 Study Previous

There are several previous studies that serve as references in the research that will be carried out by researchers. From several studies and research that have been carried out previously, the researcher includes previous research that is relevant to the research title. The difference between the researcher's research and previous research is that the researcher wants to know to what extent Law Number 8 of 2016 has been implemented towards the Empowerment of Persons with Disabilities in Medan City. Below, the researcher explains several previous studies, so it is clear that this research is different from research that has been carried out by previous research.

Table 1. Previous Research

No	Authors	Research Title	Research Objectives and Results
1	Ida Dellyarti Agustina & Wiwin Nurzanah	Accessibility Study Transportation Sustainable For People with Disabilities (Disabilities) in City Center Medan	The aim of this research is to make an assessment study of accessibility as a link for an integrated transportation system so that it can be used jointly with Persons with Disabilities in the Central Area Medan city.
2	Rosmalinda, Arif, Ainul Mardiyah	Companion Law of Sharing Incumbent Disability in the City Medan & Binjai	This research concludes that in handling legal cases involving Persons with Disabilities there are challenges, especially related to the limitations of Persons with Disabilities, the challenges are not only faced by Persons with Disabilities and their families but also Law Enforcement Officials.
3	Febri Harahap	The Role of Social Services in Improving Well-being Disabled Social Disability	The aim of this research is to distribute social assistance to people with disabilities in the city of Medan. The results of this research show that the role of Social Dias in improving the social welfare of Persons with Disabilities in Medan City is quite good and can be proven as follows; First, the role of the Social Service as a facilitator is quite good. Second, the role of the Social Service as a public servant is good. Third, the role of the Social Service as a companion is good. Fourth, the role of the Social Service as a partner has worked well. Fifth, the role of the Social Service as a Funder is good.
4	Nizar Nazila, Heri Kusmanto, Muhammad Aswin Hasibuan, Bahrum Jamil	Role of the General Election Commission Medan City In Providing Political Education For Persons with Disabilities (study case in Medan City)	This research aims to determine the extent of the role Medan City General Election Commission in providing political education for Persons with Disabilities in Medan City and what are the obstacles/barriers to the Medan City General Election Commission. The results of this research can be It was concluded that the Medan City General Election Commission had carried out its role in providing political education for Persons with Disabilities in Medan City, although it was not optimal.

2.2 Conceptual Framework

The conceptual framework in this research is that the researcher wants to see to what extent Law Number 8 of 2016 has been implemented and the researcher also wants to know the influence of the Law on the Empowerment of People with Disabilities. Here, researchers also want to know the impact of the law on empowering people with disabilities to obtain the same rights and welfare as society in general.

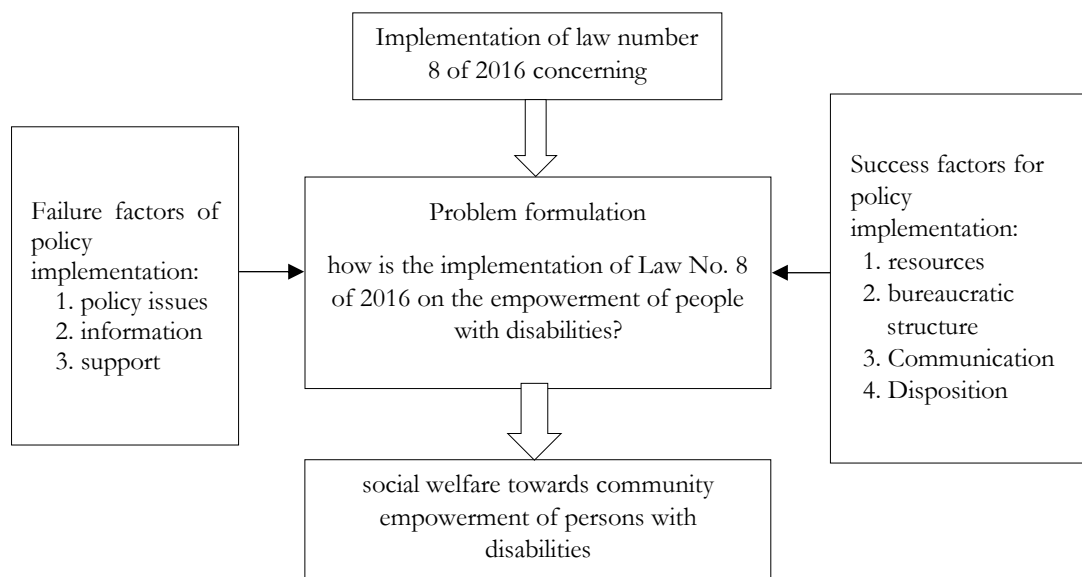


Figure 1. Conceptual Framework

3. RESEARCH DESIGN AND METHOD

David Williams (1995) wrote that qualitative research is data collection in a scientific setting, using natural methods, and carried out by people or researchers who are scientifically interested. Researchers choose to use qualitative research methods by determining how to search, collect, process and analyze research data. Qualitative research can be used to understand social interactions, for example by interviews so that clear patterns can be found.

3.1. Research Location and Time

The researcher took the research location at the Medan City Social Services Office, jl. Pinang Baris No. 114 Lalang, Kec. Medan Sunggal, Medan City, North Sumatra. This research is planned to take place throughout the period September 2023 to March 2024.

3.2. Informant

Informants are insiders in the research setting. Informants are people who are used to provide information about the situation and conditions of the research setting. The use of informants for researchers is to help them as quickly and as thoroughly as possible to immerse themselves in the local context, especially for researchers who have not experienced ethnographic training, Lincoln and Guba (1985:258). Apart from that, the use of informants for researchers is so that in a relatively short time a lot of information is collected, so it is internal sampling because informants are used to talk, exchange ideas, or compare events found from other subjects (Bogdan and Biklen, 181: 65). The informants in this research were:

- a. Key Informants are informants who have comprehensive information about the problems raised by the researcher. Key Informants not only know conditions/phenomena in society in general. Based on this understanding, the author determined the key informant, namely the Social Service employee in the Social Rehabilitation section, namely Mrs. Tuti Diana, SH.
- b. Key Informants are individuals or groups who are used as sources of data or information in providing technical descriptions related to research problems. Based on this understanding, the author determines the main informant.

3.3. Data collection



Primary Data is data in the form of words spoken orally, movements, or behavior carried out by a reliable subject. In this case, researchers conducted in-depth interviews with several informants at the North Sumatra Provincial Social Service Office and people with disabilities disability. Interviews are used as study subjects (respondents) and researchers are directly face to face in the process of obtaining information for primary data purposes. Interviews are used to obtain information related to facts, beliefs, feelings, desires and so on that are needed to fulfill research objectives. The interviews that will be carried out in this research will be carried out face to face by the author with the Head of the Social Service and people with disabilities in Medan City.

Secondary data is data that comes from personal documents, official institutional documents that have relevance to the research focus, in this case secondary data, namely archives and reports in the Social Service. The techniques used to obtain secondary data are Documentation is a way of collecting data that produces important notes related to the problem being studied. Documentation is used to collect data that is already available in documentary records in written form, for example diaries, biographical life histories, and policy regulations.

3.4. Data analysis

Data analysis is an ongoing process that requires continuous reflection on the data, asking analytical questions, and writing brief notes throughout the research. Data analysis involves open data collection and is based on general questions and analysis of information from participants. Analysis of evidence (data) consists of testing categorization, tabulation, or recombining to show the initial proposal for research (Creswell, 2015). The data analysis technique in this research was carried out using the following steps:

1. Manage and prepare data for analysis. This step involves interview transcripts and scanning material, writing data and sorting and arranging the data into different types depending on the source of the information obtained.
2. Read the entire data. The first step is to build a general sense of the information obtained and reflect on its overall meaning.
3. Analyze in detail by coding data. Data coding is the process of organizing material/information into written segments before creating others. This step involves several stages of taking written or image data that has been collected during the collection process, segmenting sentences or paragraphs.
4. Apply the coding process to describe the settings of people, categories and themes analyzed. In this case, it involves efforts to convey detailed information about people, locations, events in certain settings.
5. Shows how descriptions and themes will be presented again in the narrative/qualitative report.
6. The final step in data analysis is interpreting the data or making sense of the data.

4. RESULT AND DISCUSSION

4.1. Brief History of Research Institutions/Locations

Brief History of the Medan City Social Service, North Sumatra Province, which is an implementing element of the Regional Government led by a Head of Service who is under and directly responsible to the Mayor of Medan through the Regional Secretary of Medan City with the main task of carrying out Government affairs in the Social Sector. The Medan City Social Services Office is located at Jalan Pinang Baris/Jalan TB Simatupang (behind Terminal Pinang Baris No.114 B Medan. Medan City Social Service in improving the quality and professionalism of social services through developing alternative interventions in the field of social welfare, developing awareness, ability, responsibility and the active role of the community in dealing with social problems in the environment as well as improving the quality of life and welfare of People with Social Welfare Problems in the context of improving social welfare services for the people of Medan City, the Social Service as the Regional Work Unit of Medan City continuously strives to make changes towards the better in social welfare services for People with Social Welfare Problems. Therefore, to realize social welfare services for the community, it is necessary to develop a consistent and sustainable program and activity

planning stage, in order to increase accountability and performance that is oriented towards achieving results. Initially, the Medan City Social Service was still affiliated with the Employment Service which was called the Social and Employment Service (Dinsosnaker) until 2016. After the issuance of Medan City Regional Regulation Number 15 of 2016 concerning the Formation of Regional Apparatus and Medan Mayor Regulation Number 1 of 2017 Regarding the Organizational Structure of Medan City Regional Apparatus, in 2017 the Medan City Social Service was established independently, and its work implementation is regulated in Medan Mayor Regulation Number 35 of 2017 concerning details of duties and functions. In carrying out duties such as assisting the Mayor in carrying out Government affairs in the Social Sector, the Department carries out the following functions:

- a. formulation of government affairs policies in the social sector;
- b. implementation of government affairs policies in the social sector;
- c. implementation of evaluation and reporting on government affairs in the social sector;
- d. administrative implementation of the service in accordance with the scope of duties;
- e. implementation of assistance tasks based on statutory regulations; And
- f. implementation of other functions assigned by the mayor in accordance with his duties and functions.

4.2. Duties and Functions of The Medan City Social Service

The Department has the task of assisting the Mayor in carrying out government affairs in the social sector. In carrying out the duties as intended, the Department carries out the following functions:

- a. formulation of government affairs policies in the social sector;
- b. implementation of government affairs policies in the social sector;
- c. implementation of evaluation and reporting on government affairs in the social sector;
- d. administrative implementation of the service in accordance with the scope of duties;
- e. implementation of assistance tasks based on statutory regulations; And
- f. implementation of other functions assigned by the mayor in accordance with his duties and functions.

No	Subdistrict	2022	2023 (Jan-Jun)	Total
1	Medan Amplas	102	11	113
2	Medan Area	40	20	60
3	Medan Barat	103	20	123
4	Medan Baru	29	13	42
5	Medan Belawan	143	22	165
6	Medan Deli	56	31	87
7	Medan Denai	59	15	74
8	Medan Helvetia	105	7	112
9	Medan Johor	64	11	75
10	Medan Kota	30	21	51
11	Medan Labuhan	89	10	99
12	Medan Maimun	26	14	40
13	Medan Marelan	90	41	131
14	Medan Perjuangan	60	5	65
15	Medan Petisah	124	13	137
16	Medan Polonia	41	19	60
17	Medan Sunggal	29	19	48
18	Medan Selayang	74	11	85
19	Medan Tembung	63	1	64
20	Medan Tuntungan	41	9	50
21	Medan Timur	114	10	124

The number of registered disabled people is 1,805 disabled people, this includes those suffering from speech impairment, Down's syndrome, physical impairment, total blindness, mental retardation, ABK, mental disorders, severe disabilities, blindness, hearing impairment.

4.3. Implementation of Law No. 8 of 2016 regarding the Empowerment of People with Disabilities.

- a. Medan City Government policy towards empowering people with disabilities
Law Number 8 of 2016 concerning people with disabilities in Indonesia stipulates various rights and protections for people with disabilities. Implementation involves various parties including local governments such as Medan City. Efforts for empowerment, accessibility and equality in various sectors of life are the main focus of this law. The city of Medan has implemented regional laws and regulations for the mayor of Medan to increase the empowerment of people with disabilities.
- b. Community empowerment program for people with disabilities
 - BST (Social Cash Assistance)
 - BLT (Direct Cash Assistance)
 - Help Tools
- c. Barriers to increasing the empowerment of people with disabilities
The obstacle is that people with disabilities must be registered with DTKS (Integrated Community Welfare Data), if they are not registered with DTKS then they cannot get help or assistance from the government. Lack of coordination between relevant parties and obstacles in meeting the specific needs of everyone, a person with a disability can also be an obstacle in the implementation of the law and a lack of public awareness and understanding.

4.4. Empowerment of people with disabilities

1. Community participation of persons with disabilities
The participation of people with disabilities is always involved in various aspects of life, education, social activities and in making decisions that will be made by the government, such as making the Medan Mayor Regulation No 69 Of 2022. People with disabilities also participated in the ratification of these regulations and these regulations were created because of the existence of proposals from people with disabilities to the government and the government accepted the proposal so that regional regulations emerged.
2. The impact of empowering people with disabilities
Empowering people with disabilities can have a positive impact, such as increasing economic prosperity, encouraging independence, and bringing about changes in society's perception of people with disabilities. Directly empowering people with disabilities can help them to meet their daily needs and develop their abilities.

4.5. Program carried out by the Medan City Government for People with Disabilities

The following are programs carried out by the Medan City Government to empower people with disabilities, namely:

- a. BST (Social Cash Assistance)
The Cash Social Assistance Program or BST is a program that provides direct financial assistance to individuals or families in need, usually the government or charitable institutions. The aim of the BST program is to help those who are economically disadvantaged, providing financial support to meet basic needs such as food, education or health. This program can be in the form of direct assistance, subsidies or other assistance programs.
- b. BLT (Direct Cash Assistance)
The Direct Cash Assistance Program or often referred to as BLT is a social assistance program that provides direct financial support to individuals or families in need. Governments or charities may provide BLT as a response to difficult economic situations or as an effort to reduce poverty. This assistance can take the form of direct cash transfers to recipients or other forms of financial assistance to meet basic needs such as food, education, health or housing. This assistance is a form of Medan City Government's commitment and attention to people with disabilities. The aim of the BLT program is to help ease the financial burden and improve the welfare of the people receiving aid. The Cash Social Assistance (BST) and Direct Cash Assistance (BLT) programs have been running for 5 years and disadvantaged people with disabilities who can get this assistance are

people who have registered with DTKS (Integrated Social Welfare Data). Every year people with disabilities receive assistance from the government amounting to 1 million.

c. Providing assistive devices to people with disabilities

The provision of assistive devices is given to people with disabilities who really need them. People who receive assistive devices have reported them to the Social Service through the heads of sub-districts and sub-district heads who will immediately provide reports to the social services and the social services will report the tools they use. People with disabilities are needed by the central government or the government.

5. CONCLUSION

This research describes the implementation of Law Number 8 of 2016 towards empowering people with disabilities. In this case, this research shows that the implementation of this law has had a positive impact and is going well, especially in increasing access and participation of people with disabilities in various aspects of life. Having better coordination between related agencies is one of the keys to successful implementation. Strengthening collaboration between government and society has a significant role in optimizing the effectiveness of empowerment programs. At the implementation level, involving people with disabilities in the formulation of policies and programs is an essential element in ensuring responses that meet their needs.

REFERENCES

- Ahmad Rijali, 2018, *Qualitative Data Analysis*, Vol 17 No 33, pp 91-94, *Alhadhalah Journal*, Banjarmasin
- Arie Dwi Ningsih, 2022, rights and obligations of people with disabilities, vol 1 no 2, p 92, *Jurnal Tarbiyah Generation: Journal of Islamic Education*
- Creswell, J. W. (2015). *Research Design Quantitative, Qualitative and Approaches Mixed* (3rd ed.). Yogyakarta: Student Library.
- Dellyanti, Ida Agustina & Wiwin Nurzanah 2018, *Study of Sustainable Transportation Accessibility for People with Disabilities in Medan City Center*, Vol 31 No 2
- Harahap, Febri 2022 *The Role of Social Services in Improving Welfare Social Services for Persons with Disabilities*, Medan.
- Karinina Anggita Farrisqi, 2021, protection of the rights of persons with disabilities to obtain work and a decent living, vol 4 No 2, p 149, *Journal of Social Work*, Surabaya.
- Law No. 11 of 2009 concerning Social Welfare.
- Law No. 19 of 2011 concerning Ratification of the Rights of Persons with Disabilities Disability.
- Law No. 4 of 1997 concerning Persons with Disabilities.
- Law of the Republic of Indonesia No. 8 of 2016 concerning Persons with Disabilities Disability.
- Lexy J Moteong 2017 *Qualitative Research Methodology Revised Edition*, Youth Rosdakarya, Bandung.
- Medan Mayor Regulation No. 69 of 2022 concerning Guidelines for Providing Cash Social Assistance for People with Disabilities and the Elderly.
- Nazila, DKK 2019 *The Role of the KPU in Providing Political Education for*
- Novita Tresiana, Noverman Duadji, 2019, *Policy Implementation and Evaluation Public*, First Edition, Graha Ilmu, Yogyakarta.
- Persons with Disabilities Vol 1 No 1, *Journal of Science, Public Administration and Communication Sciences*, Medan.
- Roman Sony Tambunan, 2021, *Community Empowerment: Towards Community Smart*, First Edition, Expert, Yogyakarta.
- Rosmalinda, DKK 2018, *Legal Assistant for Persons with Disabilities in Medan and Binjai City*, Vol 1 No 1, Talenta Publisher, Medan.